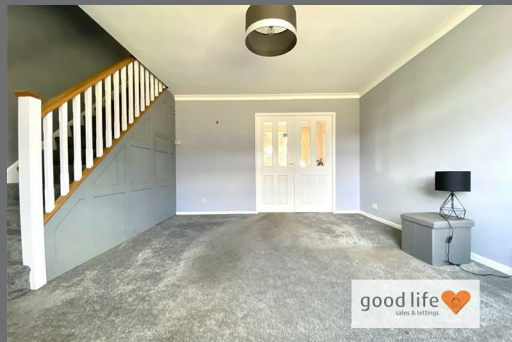


Trevarren Drive
Grangetown
Sunderland
SR2 0YZ



Trevarren Drive

£115,000

INTRODUCTION

3 BED END LINK - VERY POPULAR DEVELOPMENT - LEASEHOLD IN PROCESS OF BEING EXTENDED - WINDOWS & EXTERNAL DOORS RECENTLY REPLACED - GARAGE - NO CHAIN ...

ENTRANCE VESTIBULE

Entrance via recently installed GRP double-glazed door. Carpet flooring, partially-glazed door leading into lounge.

LOUNGE

Carpet flooring, open plan staircase leading to first floor, double radiator, front facing white uPVC double-glazed window with pleasant views, double partially-glazed door leading through to dining kitchen.

DINING KITCHEN

Laminate wood-effect flooring, radiator, 2 white uPVC double-glazed windows overlooking the rear garden, recently installed GRP double-glazed door. Modern fitted kitchen with a range of wall and floor units in a light wood-effect finish with contrasting laminate work surface, space and plumbing for an electric oven, space and plumbing for a washing machine, space for a tall fridge/freezer. Wall mounted combi boiler, stainless steel sink with bowl and a half, single drainer and matching monobloc tap. Ample space for a dining table and chairs.

FIRST FLOOR LANDING

Loft hatch, built in cupboard, 4 doors leading off, 1 to bathroom and 3 to bedrooms.

BATHROOM

Vinyl wood-effect flooring, radiator, rear facing white uPVC double-glazed window. Double shower cubicle with sliding doors and shower fed from the main combi boiler system, toilet with low level cistern, sink with single pedestal and chrome taps. The walls are partially tiled and partially finished in uPVC cladding.

BEDROOM 1

Measurements do not include depth of fitted wardrobes.
Double bedroom.

Carpet flooring, radiator, front facing white uPVC double-glazed window. Fitted wardrobes built into recess with sliding doors.

BEDROOM 2

Also a double bedroom.
Measurements do not include depth of fitted wardrobes.

Carpet flooring, radiator, rear facing white uPVC double-glazed window. Fitted wardrobes built into recess with sliding doors.

BEDROOM 3

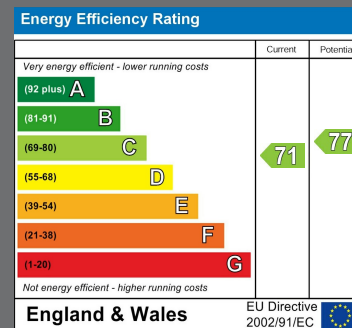
Measurements taken at widest pints

Carpet flooring, radiator, front facing white uPVC double-glazed window. Built in cupboard providing some storage and hanging space. This is a single bedroom.



Local Authority
Sunderland

Council Tax Band
B



Agents Note: Whilst every care has been taken to prepare these particulars, they are for guidance purposes only. All measurements are approximate and are for general guidance purposes only and whilst every care has been taken to ensure their accuracy, they should not be relied upon and potential buyers/tenants are advised to recheck the measurements



Contact

0191 565 6655

info@goodlifelifehomes.co.uk

www.goodlifelifehomes.co.uk

Good Life Homes - Sales

46 Windsor Terrace
Sunderland
Tyne and Wear
SR2 9QF

good life 
sales & lettings